



**ALL SEASONS HIRE**

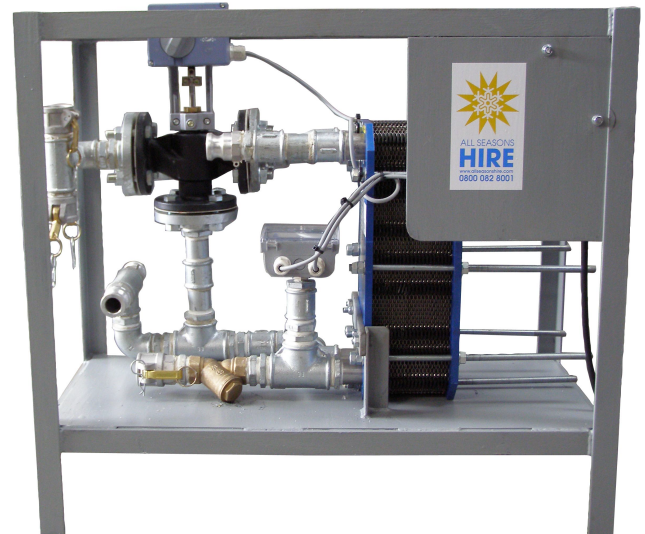
Our aim is to provide all sectors of business with short medium or long term Cooling, Heating, Drying and Refrigeration solutions.

**Our extensive and modern range of hire equipment includes:**

Air-conditioning, Heating, Dehumidification and Drying, Ventilation and Cooling Fans, Carpet Dryers, Commercial Refrigeration including Display Cabinets, Cold Storage, Ice Cream and Food Display units. We also provide for hire, larger Process and Air-conditioning Chillers and Air Handling units, Mobile Boilers and Portable Plant Rooms.

## 250kw Domestic Hot Water Plate Pack

All Seasons Hire 250kw high efficiency DHW plate pack is designed to provide a temporary domestic hot water supply when connected to either an All Seasons Hire packaged boiler plant or to an existing site boiler.



Specifications	
Heating Capacity	248 kw
DHW Inlet Temperature (Design)	35 °C
DHW Outlet Temperature (Design)	60 °C
Boiler (Primary) Inlet Temperature	80 °C
Boiler (Primary) Outlet Temperature	59.5 °C
Pressure Drop (DHW)	0.5 BAR
Mains Cold Water Inlet Connection	2" Stortz
Hot Water Outlet Connection	2" Stortz
DHW Return Connection	1" Stortz
Primary Flow and Return Connections	3" Stortz
Plate Material	316 Stainless
DHW Fittings	Brass
Electrical Supply	230v 1ph 16A (Run 3A)
Controls	Siemens 3 Way Actuating Valve
DHW Pump	Grundfos UPS 15-50N130 3 Speed
Weight (Dry)	78kg
Dimensions (LxWxH)	1055 x 590 x 1025

05/08

Call Us Free on 0800 0828001 or visit [www.allseasonshire.com](http://www.allseasonshire.com)



## Our extensive and modern range of hire equipment includes:

Air-conditioning, Heating, Dehumidification and Drying, Ventilation and Cooling Fans, Carpet Dryers, Commercial Refrigeration including Display Cabinets, Cold Storage, Ice Cream and Food Display units. We also provide for hire, larger Process and Air-conditioning Chillers and Air Handling units, Mobile Boilers and Portable Plant Rooms.

# 250kw Domestic Hot Water Plate Pack

## Pump Specifications

Description	Value
Product name:	UPS 15-50 N 130
Product No:	<a href="#">97549426</a>
EAN number:	5700318306003
<b>Technical:</b>	
Speed no:	3
Head max:	50 dm
TF class:	110
Approvals on nameplate:	CE, WRC
<b>Materials:</b>	
Pump housing:	Stainless steel
	DIN W.-Nr. 1.4301
Impeller:	Composite, PES/PP
<b>Installation:</b>	
Amb. max at 80 dgr C liquid:	40 °C
Maximum operating pressure:	10 bar
Pipe connection:	G 1 1/2
Pressure stage:	PN 10
Port-to-port length:	130 mm
Fittings:	Y
<b>Liquid:</b>	
Pumped liquid:	Water
Liquid temperature range:	2 .. 110 °C
Liquid temp:	60 °C
Density:	983.2 kg/m <sup>3</sup>
Kinematic viscosity:	1 mm <sup>2</sup> /s
<b>Electrical data:</b>	
Power input in speed 1:	35 W
Power input in speed 2:	45 W
Max. power input:	50 W
Phase:	1
Current in speed 1:	0.16 A
Current in speed 2:	0.2 A
Current in speed 3:	0.23 A
Capacitor size - run:	2 µF
Enclosure class (IEC 34-5):	44
Insulation class (IEC 85):	F
Motor protec:	NONE
Thermal protec:	Impedance protected
<b>Controls:</b>	
Pos term box:	9H
<b>Others:</b>	
Net weight:	2.65 kg
Gross weight:	2.85 kg
Shipping volume:	0.004 m <sup>3</sup>
Energy label:	B
Country code:	GB

