



Installation Operation Maintenance

**Series R™ Air-Cooled Helical Rotary
Liquid Chiller**

**Models
RTAD 85 - 125 (50Hz)**



RTAD-SVX01A-E4



Contents

General Information

7

Literature History	7
Unit Inspection	7
Inspection Checklist	7
Loose Parts Inventory	7
General Data	8
Unit Dimensions	9

Installation - Mechanical

10

Warnings and Cautions	10
Installation Responsibilities	10
Nameplates	10
Storage	10
Location Requirements	10
Setting the Unit	10
Isolation and Sound Emission	11
Noise Considerations	11
Foundation	11
Clearances	11
Unit Isolation and Leveling	11
Neoprene Isolator Installation	11
Drainage	12
Evaporator Water Piping	12
Evaporator Piping	12
Entering Chilled Water Piping	12
Leaving Chilled Water Piping	12
Evaporator Drain	12
Evaporator Flow Switch	12
Water Treatment	12
Water Pressure Gauges	13
Water Pressure Relief Valves	14
Freeze Protection	14

Contents

Installation - Electrical	15
General Recommendations	15
Installer-Supplied Components	16
Power Supply Wiring	16
Control Power Supply	17
Heater Power Supply	17
Water Pump Power Supply	17
Interconnecting Wiring	17
Chilled Water Flow (Pump) Interlock	17
Chilled Water Pump Control	17
Alarm and Status Relay Outputs (Programmable Relays)	17
Low Voltage Wiring	19
External Emergency Stop	19
External Auto/Stop	19
External Circuit Lockout - Circuit 1 and Circuit 2	19
Ice Making Option	19
External Chilled Water Setpoint (CWS)	20
External Current Limit Setpoint (CLS)	20
Outdoor Air Temperature Sensor	20
Communication Card CSR	21
Communication link connection procedure	21
Operating Principles	22
System schematic	22
Pre-Start Checkout	23
Installation Checklist	23
Receiving	23
Unit Location and Mounting	23
Unit Piping	23
Electrical Wiring	23
General	23
Unit Voltage Power Supply	24
Unit Voltage Imbalance	24
Unit Voltage Phasing	24
Water System Flow Rates	25
Water System Pressure Drop	25

Contents

Unit Start-up Procedures	26
Daily Unit Start-Up	26
General	26
Seasonal Unit Start-Up Procedure	26
System Restart After Extended Shutdown	27
Unit Shutdown Procedures	28
Temporary Shutdown And Restart	28
Extended Shutdown Procedure	28
Maintenance	29
General	29
Weekly Maintenance	29
Monthly Maintenance	29
Annual Maintenance	29
Maintenance Procedures	30
Refrigerant Emission Control	30
Refrigerant and Oil Charge Management	30
R134a Field Charging Procedure	31
Refrigerant Charging	31
Isolating the Refrigerant in the High Pressure Side	31
Isolating the Refrigerant in the Low Pressure Side	32
Adding Refrigerant	32
Refrigerant Filter Changing Procedure	32
Lubrication System	33
Oil Charging Procedure	33
Factory (initial) Oil Charging Procedure	34
Field Oil Charging Procedure	34
Evaporator HeatTape Checkout Procedure	35
Safety Recommendations	35
Maintenance Contract	35
Training	35

List of Figures



Figure 1 - Typical unit nameplate	7
Figure 2 - Unit dimensions and minimum recommended clearances	9
Figure 3 - Rigging the unit	10
Figure 4 - Evaporator water pressure drop	13
Figure 5 - Suggested piping for typical RTAD evaporator	13
Figure 6 - Warning label	15
Figure 7 - Alarm/Running/Maximum capacity relay output	18
Figure 8 - System/Oil system schematic	22

List of Tables

Table 1 - General Data Standard RTAD units	8
Table 2 - General Data High Efficiency and High Ambient RTAD units	8
Table 3 - General Data High Efficiency Low Noise RTAD units	9
Table 4 - Electrical Data	16
Table 5 - Alarm/Running/Maximum capacity relay output configuration	18
Table 6 - Alarm/Running/Maximum capacity menu setting	18
Table 7 - Input values vs. External chilled-water setpoint	20
Table 8 - Input values vs. External current-limit setpoint	20
Table 9 - Standard refrigerant charge	32
Table 10 - Standard oil charge	33

General Information

Figure 1 - Typical Unit Nameplate

TYPE	[]					
1	CRC	N° SERIE	2	CCYY	N° ORGANISME NOTIFIE	3
	[]	[]	[]	[]	[]	[]
	QTE-QTY	V / Hz / Ph	A max / FLA	kW max		
	C1	[]	[]	[]	[]	
	C2	[]	[]	[]	[]	
		[]	[]	[]	[]	
		[]	[]	[]	[]	
CONTROLE - CONTROL		[]				VA
INTENSITE DEMARRAGE - STARTING AMPS			[]			
FLUIDE	4	[]	C1/C2	[]	kg	
		[]	C1/C2	[]	l	
PS	BP-LP	[]	bar	HP-HP	[]	bar
EN/DE/IT/ES/DA/FI/NL/NO/PT/SV/CZ/PO/HU/EL						
1	Type / Typ / Tipo / Tipo / Type / Tyypit / Type / Type / Tipo / Typ / Typ / Typ / Tipus / Τύπος					
2	Serial nb / Serienummer / Numero di serie / Numero de serie / Serienummer / Sarjanumero / Serienummer / Serienummer / Numero di serie / Tillverkningsnummer / Sérovié èislo / Number fabryczny / Sorozat szám / Αριθμός σειράς					
3	Notified body / Benannte Stelle / Organismo notificato / Organismo notificado / Bemyndiget organ / Ilmottettujen laitosten / Aangemelde Instantie / Ramme nr. / Organismo notificado / Anmält organ / Autorizovaná osoba / Organizacja notyfikowana / Regisztráció száma / Σώμα γνωστοποίησης					
4	Fluid / Fluide / Fluido / Fluido / Fluidum / Fluidi / Stof / Kuldemedium / Fluido / Fluid / Kapalina / Czynnik / Közeg / ρευστό					
		88130 CHARMES - FRANCE				AN AMERICAN STANDARD COMPANY

The owner must provide reasonable evidence that the damage did not occur after delivery.

- Notify the carrier's terminal of the damage immediately, by phone and by mail. Request an immediate, joint inspection of the damage with the carrier and the consignee.
- Notify the Trane sales representative and arrange for repair. Do not repair the unit, however, until damage is inspected by the carrier's representative.

Loose Parts Inventory

Check all the accessories and loose parts which are shipped with the unit against the shipping list. Included in these items will be water vessel drain plugs, rigging and electrical diagrams, and service literature, which are placed inside the control panel and/or starter panel for shipment.

Literature History

New manual describes installation, operation, and maintenance of RTAD units.

A separate manual, RLC-SVU02A, is available for the use and maintenance of the unit's controls - UCM-CLD.

Unit Inspection

When the unit is delivered, verify that it is the correct unit and that it is property equipped. Compare the information which appears on the unit nameplate with the ordering and submittal information. A typical unit nameplate is shown in Figure 1. Inspect all exterior components for visible damage. Report any apparent damage or material shortage to the carrier and make a "unit damage" notation on the carrier's delivery receipt. Specify the extent and type of damage found and notify the

appropriate Trane Sales Office. Do not proceed with installation of a damaged unit without sales office approval.

Inspection Checklist

To protect against loss due to damage incurred in transit, complete the following checklist upon receipt of the unit.

- Inspect the individual pieces of the shipment before accepting the unit. Check for obvious damage to the unit or packing material.
- Inspect the unit for concealed damage as soon as possible after delivery and before it is stored. Concealed damage must be reported within 15 days.
- If concealed damage is discovered, stop unpacking the shipment. Do not remove damaged material from the receiving location. Take photos of the damage, if possible.



General Information

General Data

Table 1 - General Data RTAD 085 - 125 Standard

Size		85	100	115	125
Compressor					
Quantity		2	2	2	2
Nominal Size (1)	(Tons)	40/40	50/50	60/60	70/70
Evaporator					
Evp. Model		EG 120	EG 140	EG 170	EG 200
Water Storage	(l)	106	270	222	204
Min. Flow	(l/s)	5.7	6.9	8.2	9.5
Max. Flow	(l/s)	17.3	20.8	24.6	28.4
Condenser					
Qty of Coils		2	2	2	2
Coil Length	(mm)	2743	3658	3658	3658
Coil Height	(mm)	1575	1575	1575	1575
Fin series	(fins/ft)	192	192	192	192
Number of Rows		3/3	2/2	3/3	3/3
Condenser Fans					
Quantity (1)		6	6	6	6
Diameter	(mm)	762	762	762	762
Total Air Flow	(m3/s)	23.43	28.59	27.04	27.07
Nominal RPM		915	915	915	915
Tip Speed	(m/s)	36.48	36.48	34.48	34.48
Motor kW	(kW)	1.9	1.9	1.9	1.9
Min Starting/Oper Ambient (2)					
Std Unit	(°C)	7	7	7	7
Low Ambient Unit	(°C)	-18	-18	-18	-18
General Unit					
Refrigerant		HFC 134a	HFC 134a	HFC 134a	HFC 134a
No. Of independent Refrigerant Circuits		2	2	2	2
% Min. Load (3)		17	17	17	17
Refrigerant Charge (1)	(kg)	51	50	69	71
Oil Charge (1)	(l)	10	12	16	18
Operating Weight	(kg)	2660	3100	3560	3570
Shipping Weight	(kg)	2550	2835	3335	3570

Table 2- General Data RTAD 085 - 125 High Efficiency and High Ambient

Size		85	100	115	125
Compressor					
Quantity		2	2	2	2
Nominal Size (1)	(Tons)	40/40	50/50	60/60	70/70
Evaporator					
Evp. Model		EG 140	EG 170	EG 200	EG 200
Water Storage	(l)	270	222	204	204
Min. Flow	(l/s)	5.7	6.9	8.2	9.5
Max. Flow	(l/s)	17.3	20.8	24.6	28.4
Condenser					
Qty of Coils		2	2	2	2
Coil Length	(mm)	3658	3658	4572	4572
Coil Height	(mm)	1575	1575	1575	1575
Fin series	(fins/ft)	192	192	192	192
Number of Rows		3/3	3/3	3/3	3/3
Condenser Fans					
Quantity (1)		6	8	8	10
Diameter	(mm)	762	762	762	762
Total Air Flow	(m3/s)	27.0	31.2	35.0	39.1
Nominal RPM		915	915	915	915
Tip Speed	(m/s)	36.48	36.48	36.48	36.48
Motor kW	(kW)	1.9	1.9	1.9	1.9
Min Starting/Oper Ambient (2)					
Std Unit	(°C)	7	7	7	7
Low Ambient Unit	(°C)	-18	-18	-18	-18
General Unit					
Refrigerant		HFC 134a	HFC 134a	HFC 134a	HFC 134a
No. Of independent Refrigerant Circuits		2	2	2	2
% Min. Load (3)		17	17	17	17
Refrigerant Charge (1)	(kg)	50	69	87	87
Oil Charge (1)	(l)	10	12	18	18
Operating Weight	(kg)	3240	3370	3905	4000
Shipping Weight	(kg)	2975	3145	3700	3800

General Information

Table 3 - General Data RTAD 085 - 125 High Efficiency Low Noise

Size		85	100	115	125
Compressor					
Quantity		2	2	2	2
Nominal Size (1)	(Tons)	40/40	50/50	60/60	70/70
Evaporator					
Evp. Model		EG 140	EG 170	EG 200	EG 200
Water Storage	(l)	270	222	204	204
Min. Flow	(l/s)	5.7	6.9	8.2	9.5
Max. Flow	(l/s)	17.3	20.8	24.6	28.4
Condenser					
Qty of Coils		2	2	2	2
Coil Length	(mm)	3658	3658	4572	4572
Coil Height	(mm)	1575	1575	1575	1575
Fin series	(fins/ft)	192	192	192	192
Number of Rows		3/3	3/3	3/3	3/3
Condenser Fans					
Quantity (1)		6	8	8	10
Diameter	(mm)	762	762	762	762
Total Air Flow	(m ³ /s)	19.25	22.23	24.99	27.83
Nominal RPM		730	730	730	730
Tip Speed	(m/s)	29.1	29.1	29.1	29.1
Motor kW	(kW)	1.05	1.05	1.05	1.05
Min Starting/Oper Ambient (2)					
Std Unit	(°C)	7	7	7	7
Low Ambient Unit	(°C)	-18	-18	-18	-18
General Unit					
Refrigerant		HFC 134a	HFC 134a	HFC 134a	HFC 134a
No. of independent Refrigerant Circuits		2	2	2	2
% Min. Load (3)		17	17	17	17
Refrigerant Charge (1)	(kg)	50	69	87	87
Oil Charge (1)	(l)	10	12	18	18
Operating Weight	(kg)	3340	3470	4005	4100
Shipping Weight	(kg)	3075	3245	3800	

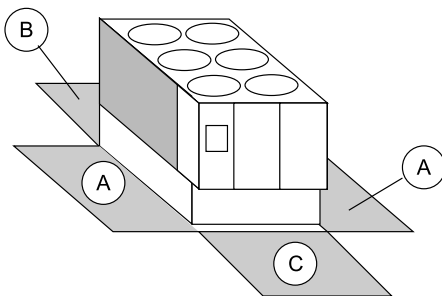
(1) Data containing information for two circuits

(2) Minimum start-up/operation ambient based on a 2.22 m/s (5mph) wind across the condenser.

(3) Percent minimum load is for total machine at 10°C (50F) ambient and 7°C (44F) leaving chilled water temp. Not each individual circuit.

Unit Dimensions

Figure 2 - Unit Dimensions and Minimum Recommended Clearances



Unit size	Unit Dimensions			Minimum clearances		
	Length	Width	Height	A	B	C
085 STD/HE	3381	2260	2095	1000	1000	1200
100 STD/HE	4300	2260	2095	1000	1000	1200
115 STD/HE	5219	2115	2095	1000	1000	1200
125 STD/HE	5219	2115	2095	1000	1000	1200

Installation - Mechanical

Warnings and Cautions

Warnings and Cautions appear in boldface type at appropriate points in this manual. Warnings are provided to alert personnel to potential hazards that can result in personal injury or death; they do not replace the manufacturer's recommendations. Cautions alert personnel to conditions that could result in equipment damage. Your personal safety and reliable operation of this machine depend upon strict observance of these precautions.

Installation Responsibilities

Generally, the contractor must do the following when installing an RTAD unit:

- Install unit on a flat foundation, level (within 1/4" [6 mm] across the length of the unit), and strong enough to support unit loading.
- Install unit per the instructions contained in the Installation-Mechanical and Installation-Electrical sections of this manual.
- Install any optional sensors and make electrical connections at the UCM-CLD.
- Where specified, provide and install valves in water piping upstream and downstream of evaporator water connections to isolate the evaporator for maintenance, and to balance/trim system.
- Furnish and install flow switch and/or auxiliary contacts to prove chilled water flow.
- Furnish and install pressure gauges in inlet and outlet piping of the evaporator.
- Furnish and install a drain valve to the bottom of the evaporator waterbox.
- Supply and install a vent cock to the top of the evaporator waterbox.
- Furnish and install strainers ahead of all pumps and automatic modulating valves.
- Provide and install field wiring.
- Install heat tape and insulate the chilled water lines and any other portions of the system, as

required, to prevent sweating under normal operating conditions or freezing during low ambient temperature conditions.

- Start unit under supervision of a qualified service technician.

Nameplates

The RTAD outdoor unit nameplates (Figure 1) are applied to the exterior of the control panel. A compressor nameplate is located on each compressor.

Outdoor Unit Nameplate

The outdoor unit nameplate provides the following information:

- Unit model and size description
- Unit serial number
- Identifies unit electrical requirements
- Lists correct operating charges of R-134a and refrigerant oil (Trane OK00048)
- Lists unit test pressures

Compressor Nameplate

The compressor nameplate provides following information:

- Compressor model number.
- Compressor serial number.

- Compressor electrical characteristics.
- Utilization range
- Recommended refrigerant

Storage

Extended storage of the outdoor unit prior to installation requires the following precautionary measures:

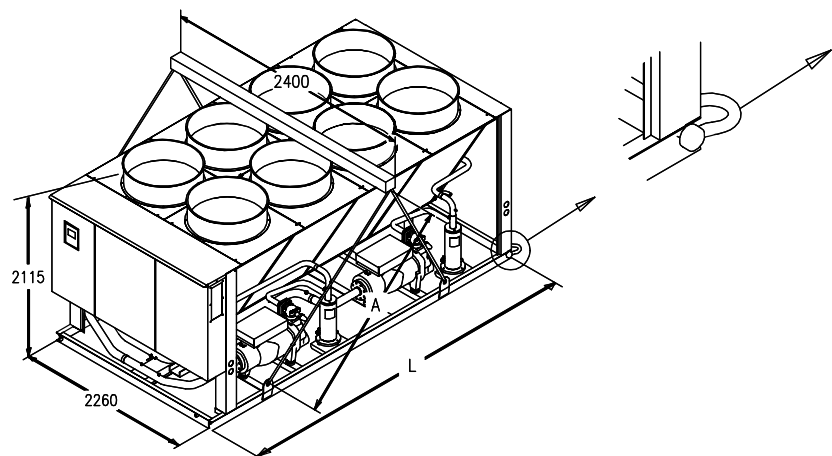
- Store the outdoor unit in a secure area.
- At least every three months (quarterly), check the pressure in the refrigerant circuits to verify that the refrigerant charge is intact. If it is not, contact a qualified service organization and the appropriate Trane sales office.
- Close the discharge and liquid line isolation valves.

Location Requirements

Setting the Unit

A base or foundation is not required if the selected unit location is level and strong enough to support the unit's operating weight as listed in Tables 1,2, and 3.

Figure 3 - Rigging the Unit



RTAD	L	A	Maximum weight	
			Alumimium	Copper
85 STD	3381 mm	4000 mm	2760 kg	3090 kg
100-115-125 STD				
85-100 HE	4300 mm	4000 mm	3670 kg	4110 kg
115-125 HE	5219 mm	4000 mm	4100 kg	4655 kg

Installation - Mechanical

CAUTION: Refer to nameplate for unit weight and additional installation instructions contained inside the control panel. Other lifting arrangements may cause equipment damage or serious personal injury.

Isolation and Sound Emission

The most effective form of isolation is to locate the unit away from any sound sensitive area. Structurally transmitted sound can be reduced by elastomeric vibration eliminators. Spring isolators are not recommended. Consult an acoustical engineer in critical sound applications. For maximum isolation effect, isolate water lines and electrical conduit. Wall sleeves and rubber isolated piping hangers can be used to reduce the sound transmitted through water piping. To reduce the sound transmitted through electrical conduit, use flexible electrical conduit. State and local codes on sound emissions should always be considered. Since the environment in which a sound source is located affects sound pressure, unit placement must be carefully evaluated. Sound power levels for Trane air-cooled RTAD chillers are available on request.

Noise Considerations

Locate the outdoor unit away from sound sensitive areas. If required, install rubber vibration isolators in all water piping and use flexible electrical conduit. Consult an acoustical engineer for critical applications. Also refer to Trane Engineering Bulletins for application information on RTAD chillers.

Foundation

Provide rigid, non-warping mounting pads or a concrete foundation of sufficient strength and mass to support the outdoor unit operating weight (i.e., including completed piping, and full operating charges of refrigerant, oil and water). Refer to Tables 1, 2 and 3 for unit operating weights. Once in place, the outdoor unit must be level within 1/4" (6 mm) over its length and width.

Trane is not responsible for equipment problems resulting from an improperly designed or constructed foundation.

Note: To allow for cleaning under the condensing coil, it is recommended that an opening be left between the unit base and the concrete pad.

Clearances

Refer to Figure 2 for minimum clearances. Provide enough space around the outdoor unit to allow the installation and maintenance personnel unrestricted access to all service points. Refer to submittal drawings for the unit dimensions. A minimum of four feet is recommended for compressor service. Provide sufficient clearance for the opening of control panel doors. In all cases, local codes which require additional clearances will take precedence over these recommendations.

Unobstructed flow of condenser air is essential to maintain chiller capacity and operating efficiency. When determining unit placement, give careful consideration to assuring a sufficient flow of air across the condenser heat transfer surface. Two detrimental conditions are possible and must be avoided if optimum performance is to be achieved: warm air recirculation and coil starvation. Warm air recirculation occurs when discharge air from the condenser fans is recycled back to the condenser coil inlet. Coil starvation occurs when free airflow to (or from) the condenser is restricted. Both warm air recirculation and coil starvation cause reduction in unit efficiency and capacity due to the increased head pressures. Debris, trash, supplies etc. should not be allowed to accumulate in the vicinity of the unit. Supply air movement may draw debris into the condenser coil, blocking spaces between coil fins and causing coil starvation. Special consideration should be given to low ambient units.

Condenser coils and fan discharge must be kept free of snow or other obstructions to permit adequate airflow for satisfactory unit operation.

In situations where equipment must be installed with less clearance than recommended, such as frequently occurs in retrofit and rooftop applications, restricted airflow is common. The Main Processor will direct the unit to make as much chilled water as possible given the actual installed conditions. Consult your Trane sales engineer for more details.

Note: If the outdoor unit configuration requires a variance to the clearance dimensions, contact your Trane Sales Office Representative. Also refer to Trane Engineering Bulletins for application information on RTAD chillers.

Unit Isolation and Leveling

For additional reduction of sound and vibration, install the optional neoprene isolators. Construct an isolated concrete pad for the unit or provide concrete footings at the unit mounting points. Mount the unit directly to the concrete pads or footings. Level the unit using the base rail as a reference. The unit must be level within 1/4-in (6 mm) over the entire length. Use shims as necessary to level the unit.

Neoprene Isolator (optional) Installation

Refer to submittals for diagrams.

- 1 Secure the isolators to the mounting surface using the mounting slots in the isolator base plate. DO NOT fully tighten the isolator mounting bolts at this time.
- 2 Align the mounting holes in the base of the unit with the threaded positioning pins on the top of the isolators.
- 3 Lower the unit onto the isolators and secure the isolator to the unit with a nut. Maximum isolator deflection should be 1/4 inch (6 mm).

Installation - Mechanical

4 Level the unit carefully. Fully tighten the isolator mounting bolts.

Drainage

Provide a large capacity drain for water vessel drain-down during shutdown or repair. The evaporator is provided with a drain connection. All local and national codes apply. The vent on the top of the evaporator shell is provided to prevent a vacuum by allowing air into the evaporator for complete drainage.

Evaporator Water Piping

Thoroughly flush all water piping to the unit before making the final piping connections to the unit.

Caution: If using an acidic commercial flushing solution, construct a temporary bypass around the unit to prevent damage to internal components of the evaporator. To avoid possible equipment damage, do not use untreated or improperly treated system water.

Evaporator Piping

Components and layout will vary slightly, depending on the location of connections and the water source.

Caution: The chilled water connections to the evaporator are to be flange type connections.

To prevent damage to chilled water components, do not allow evaporator pressure (maximum working pressure) to exceed 150 psig (10.5 bar).

Provide shutoff valves in lines to the gauges to isolate them from the system when they are not in use.

Use rubber vibration eliminators to prevent vibration transmission through the water lines. If desired, install thermometers in the lines to monitor entering and leaving water temperatures. Install a balancing valve in the leaving water line to control water flow balance. Install shutoff valves on both the entering and leaving water lines so that the evaporator can be isolated for service.

Caution: A pipe strainer must be installed in the entering water line. Failure to do so can allow waterborne debris to enter the evaporator.

"Piping components" include all devices and controls used to provide proper water system operation and unit operating safety. These components and their general locations are given below.

Entering Chilled Water Piping

- Air vents (to bleed air from system).
- Water pressure gauges with shutoff valves.
- Vibration eliminators.
- Shutoff (isolation) valves. Thermometers (if desired).
- Clean-out tees.
- Pipe strainer.

Caution: Install strainer in evaporator water inlet piping. Failure to do so can result in evaporator tube damage.

Leaving Chilled Water Piping

- Air vents (to bleed air from system).
- Water pressure gauges with shutoff valves. Vibration eliminators.
- Shutoff (isolation) valves.
- Thermometers.
- Clean-out tees.
- Balancing valve.
- Flow Switch

Caution: To prevent evaporator damage, do not exceed 150 psig (10.5 bar) evaporator water pressure.

Evaporator Drain

A 3/4" drain connection is located under the evaporator shell. This may be connected to a suitable drain to permit evaporator drainage during unit servicing. A shutoff valve must be installed on the drain line.

Evaporator Flow Switch

Specific connection and schematic wiring diagrams are shipped with the unit. Some piping and control schemes, particularly those using a single water pump for both chilled and hot water must be analyzed to determine how and or if a flow-sensing device will provide desired operation.

Follow the manufacturer's recommendations for selection and installation procedures. General guidelines for flow switch installation are outlined below

1. Mount the switch upright, with a minimum of 5 pipe diameters of straight horizontal run on each side. Do not install close to elbows, orifices or valves.

Note: The arrow on the switch must point in the direction of flow.

2. To prevent switch fluttering, remove all air from the water system.

Note: The UCM-CLD provides a 6-second time delay after a "loss-of-flow" diagnostic before shutting the unit down. Contact a qualified service representative if nuisance machine shutdowns persist.

3. Adjust the switch to open when water flow falls below nominal. Evaporator data is given in Tables 1, 2 and 3. Flow switch contacts are closed on proof of water flow.
4. Install a pipe strainer in the entering evaporator water line to protect components from waterborne debris.

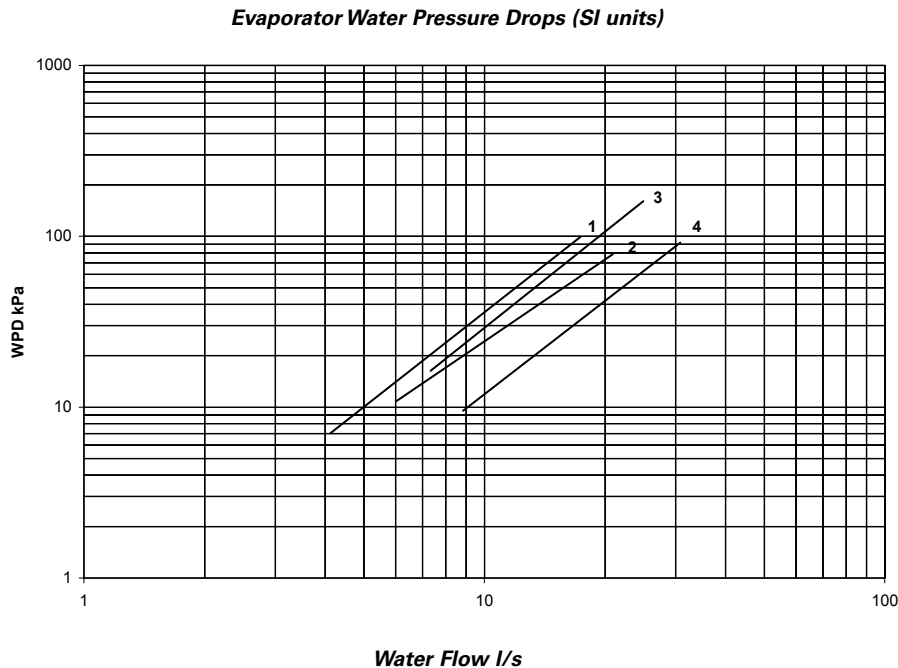
Water Treatment

CAUTION: If calcium chloride is used for water treatment, an applicable corrosion inhibitor must also be used. Failure to do so may result in damage to system components.

Dirt, scale, products of corrosion and other foreign material will adversely affect heat transfer between the water and system components. Foreign matter in the chilled water system can also increase pressure drop and, consequently, reduce water flow. Proper water treatment must be determined locally,

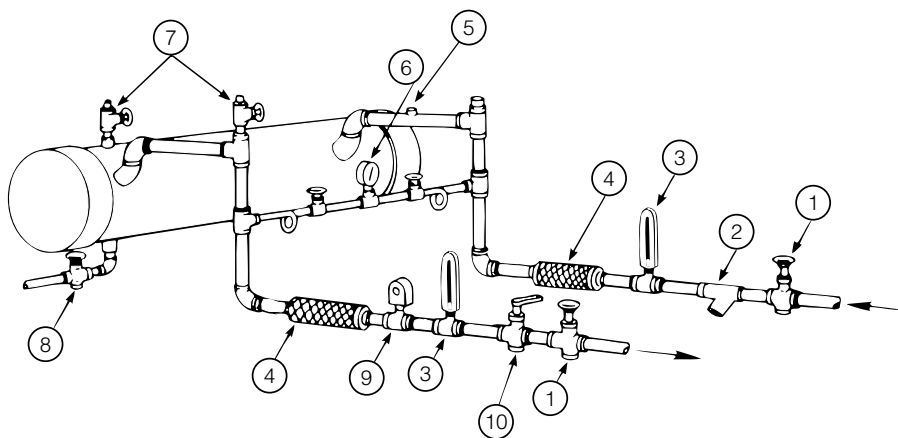
Installation - Mechanical

Figure 4: Evaporator Water Pressure Drop RTAD



Legend	RTAD Std	RTAD HE	RTAD HELN	RTAD HA
Curve				
1	85	***	***	***
2	100	85	85	85
3	115	100	100	100
4	125	115 - 125	115 - 125	115 - 125

Figure 5 - Suggested piping for typical RTAD evaporator



- | | |
|------------------------------|--------------------------|
| 1. Gate valve | 6. Valved pressure gauge |
| 2. Water strainer | 7. Vent |
| 3. Thermometer (user option) | 8. Drain |
| 4. Vibration eliminator | 9. Flow switch |
| 5. Relief valve | 10. Balancing valve |

depending on the type of system and local water characteristics. Neither salt nor brackish water is recommended for use in Trane air-cooled Series R™ chillers. Use of either will lead to a shortened life to an indeterminable degree. The Trane Company encourages the employment of a reputable water treatment specialist, familiar with local water conditions, to assist in this determination and in the establishment of a proper water treatment program.

Using untreated or improperly treated water in these units may result in inefficient operation and possible tube damage. Consult a qualified water treatment specialist to determine whether treatment is needed. The following disclamatory label is provided on each RTAD unit: *Note: The use of improperly treated or untreated water in this equipment may result in scaling, erosion, corrosion, algae or slime. The services of a qualified water treatment specialist should be engaged to determine what treatment, if any, is advisable. The Trane Company warranty specifically excludes liability for corrosion, erosion or deterioration of Trane equipment.*

Caution: Do not use untreated or improperly treated water. Equipment damage may occur.

Water Pressure Gauges

Install field-supplied pressure components as shown in Figure 5. Locate pressure gauges or taps in a straight run of pipe; avoid placement near elbows, etc. Be sure to install the gauges at the same elevation on each shell if the shells have opposite-end water connections. To read manifolded pressure gauges, open one valve and close the other (depending upon the reading desired). This eliminates errors resulting from differently calibrated gauges installed at unmatched elevations.

Installation - Mechanical

Water Pressure Relief Valves

Caution: To prevent shell damage, install pressure relief valves in the evaporator water system.

Install a water pressure relief valve in the evaporator inlet piping between the evaporator and the inlet shutoff valve, as shown in Figure 8. Water vessels with close-coupled shutoff valves have a high potential for hydrostatic pressure buildup on a water temperature increase. Refer to applicable codes for relief valve installation guidelines.

Freeze Protection

If the unit will remain operational at subfreezing ambient temperatures, the chilled water system must be protected from freezing, following the steps listed below

- 1 Heaters are factory-installed on the packaged unit evaporator and will protect it from freezing in ambient temperatures down to -18°C (0°F).
- 2 Install heat tape on all water piping, pumps, and other components that may be damaged if exposed to freezing temperatures. Heat tape must be designed for low ambient temperature applications. Heat tape selection should be based on the lowest expected ambient temperature.
- 3 Add a non-freezing, low temperature, corrosion inhibiting, heat transfer fluid to the chilled water system. The solution must be strong enough to provide protection against ice formation at the lowest anticipated ambient temperature. Refer to Table 1 through Table 3 in Section 1 for evaporator water storage capacities.

Note: Use of glycol type antifreeze reduces the cooling capacity of the unit and must be considered in the design of the system specifications.

Installation - Electrical

General Recommendations

WARNING: The warning label shown in Figure 6 is displayed on the equipment. Strict adherence to these warnings must be observed. Failure to do so may result in personal injury or death.

All wiring must comply with local codes. Typical field wiring diagrams are included in the unit control panel. Minimum circuit ampacities and other unit electrical data are on the unit nameplate and in the general data tables. See the unit order specifications for actual electrical data. Specific electrical schematics and connection diagrams are shipped with the unit.

Caution: To avoid corrosion and overheating at terminal connections, use copper conductors only. Failure to do so may result in damage to the equipment.

Do not allow conduit to interfere with other components, structural members or equipment. Control voltage (115V) wiring in conduit must be separate from conduit carrying low voltage (<30V) wiring. **Caution:** To prevent control malfunctions, do not run low voltage wiring (<30V) in conduit with conductors carrying more than 30 volts.

Figure 6 - Warning Label

 	X39001039-01 Rev. A2
Ouvrir le sectionneur principal avant toute intervention. Certains circuits restent sous tension après coupure du sectionneur principal.	
Bevor mit arbeiten an elektrischen teilen begonnen werden kann, muss der haupschalter geoeffnet werden. Dennoch ist zu beachten, dass bestimmte stromkreise weiterhin spannungsfuehrend sind.	
Open main disconnect switch before servicing any electrical component. Some circuits remain live after opening main disconnect switch.	
Prima di effettuare qualsiasi intervento, aprire il sezionatore principale. Alcuni circuiti rimangono sotto tensione dopo aver aperto il sezionatore principale.	
Voor service aan de koelinstallatie schakel de spanning uit door het uitschakelen van de hoofdschakelaar. Enkele elektrische componenten blijven onder spanning staan na het uitschakelen van de hoofdschakelaar.	
Abrir el sectionador antes de toda intervencion en el panel electrico. Algunos circuitos quedan con tension mantenida despues de la apertura del sectionador.	
Πριν οποιαδηποτε παρεμβαση, ανοιξτε τον κεντρικο αποζευκτηρα. Μετα τη διακοπη του κεντρικου αποζευκτηρα, ορισμενα κυκλωματα παραμενουν υπο ταση.	
Desligar o interruptor principal antes de qualquer intervençao. Alguns circuitos permanecem ligados à corrente depois de o interruptor principal ser desligado.	
Afbryd hovedleningsadskilleren før indgreb. Visse kredse er stadig under spænding, selv efter at hovedledningsadskilleren er afbrudt.	
Öppna huvudfrånskiljaren innan du utför någon annan åtgärd. Vissa kretsängar kan vara strömförande även efter att frånskiljaren har frånskopplats.	
Frakoble hovedbryteren før du gjør noe annet. Enkelte ledninger kann være strømførende selv etter at hovedbryteren er frakoblet.	
Avaa pääkatsisija aina ennen toiminnan käynnistämistä. Pääkatkaisijan sulkemisen jälkeen joihinkin virtapiireihin saattaa jäädä jännitettä.	



Installation - Electrical

Table 4 RTAD 85-125 Electrical Data (400V/3Ph/50Hz)

Unit Size	Nbr of Power Connections	Maximum Amps (1)	Starting Amps (2)	Unit Wiring			
				Power Factor (5)	Disconnect Switch Size	Compressor Fuse Size (A)	Evaporator heater (kW)
RTAD Standard							
85	1	229	250	0.89	250 A	6 x 125 A	0.217
100	1	279	305	0.86	400 A	6 x 160 A	0.217
115	1	324	359	0.89	400 A	6 x 200 A	0.217
125	1	390	426	0.90	500 A	6 x 250 A	0.217
RTAD High Efficiency/High Ambient							
85	1	229	250	0.89	400 A	6 x 160 A	0.217
100	1	288	314	0.86	400 A	6 x 200 A	0.217
115	1	333	368	0.89	400 A	6 x 250 A	0.217
125	1	408	444	0.90	500 A	6 x 250 A	0.217
RTAD High Efficiency Low Noise							
85	1	218	239	0.89	250 A	6 x 125 A	0.217
100	1	273	299	0.86	400 A	6 x 160 A	0.217
115	1	318	353	0.89	400 A	6 x 200 A	0.217
125	1	389	425	0.90	500 A	6 x 250 A	0.217

Electrical Data RTAD 085 - 125 (continued)

Unit Size	Motor Data												
	Compressor (Each)						Fans (Each)			Control (400V)			
	Qty	RLA Amps		Max Amps (3)		Starting Amps (4)		Qty	kW	FLA	Fans fuse size (A)	VA	A
RTAD Standard													
85	2	75	75	99	99	144	144	6	2.05	4.5	3 x 50 A	1600	4
100	2	94	94	124	124	180	180	6	2.05	4.5	3 x 50 A	1600	4
115	2	111	111	147	147	217	217	6	2.05	4.5	3 x 50 A	1600	4
125	2	136	136	180	180	259	259	6	2.05	4.5	3 x 50 A	1600	4
RTAD High Efficiency/High Ambient													
85	2	75	75	99	99	144	144	6	2.05	4.5	3 x 50 A	1600	4
100	2	94	94	124	124	180	180	8	2.05	4.5	3 x 50 A	1600	4
115	2	111	111	147	147	217	217	8	2.05	4.5	3 x 50 A	1600	4
125	2	136	136	180	180	259	259	10	2.05	4.5	3 x 50 A	1600	4
RTAD High Efficiency Low Noise													
85	2	75	75	99	99	144	144	6	1.05	2.6	3 x 50 A	1600	4
100	2	94	94	124	124	180	180	8	1.05	2.6	3 x 50 A	1600	4
115	2	111	111	147	147	217	217	8	1.05	2.6	3 x 50 A	1600	4
125	2	136	136	180	180	259	259	10	1.05	2.6	3 x 50 A	1600	4

(1) Maximum Compressors FLA + all fans FLA + control Amps

(2) Starting Amps of the circuit with the largest compressor circuit including fans plus RLA of the second circuit including fans + control Amps

(3) Maximum FLA per compressor.

(4) Compressors starting Amps, Star delta start.

(5) Compressor Power Factor

- As standard, all units have single point power connection.
- LRA (Locked Rotor Amps) - based on full winding (x-line) start units. LRA for wye-delta starters is 1/3 of LRA of x-line units.
- VOLTAGE UTILIZATION RANGE:

Rated Voltage	Utilization Range
400/50/3	340-460

For the RTAD 100 only, the Utilization Range is 360 - 460 Volts

Installer-Supplied Components

Caution: Customer wiring interface connections are shown in the electrical schematics and connection

diagrams that are shipped with the unit. The installer must provide the following components if not ordered with the unit:

- Power supply wiring (in conduit) for all field-wired connections.
- All control (interconnecting) wiring (in conduit) for field supplied devices.
- Fused-disconnect switches or circuit breakers.
- Power factor correction capacitors.

Power Supply Wiring

All power supply wiring must be sized and selected accordingly by the project engineer in accordance with EN 60204.

WARNING: To prevent injury or death, disconnect all electrical power

sources before completing wiring connections to the unit.

All wiring must comply with local electrical codes. The installing (or electrical) contractor must provide and install the system interconnecting wiring and the power supply wiring. It must be properly sized and equipped with the appropriate fused disconnect switches. The type and installation location(s) of the fused disconnects must comply with all applicable codes.

Caution: Use only copper conductors for terminal connections to avoid corrosion or overheating.

Cut holes into the sides of the control panel for the appropriately sized power wiring conduits.

Installation - Electrical

The wiring is passed through these conduits and connected to the terminal blocks, optional unit-mounted disconnects, or circuit breakers.

To provide proper phasing of 3-phase input, make connections as shown in field wiring diagrams and as stated on the Warning label in the starter panel. For additional information on proper phasing, refer to "Unit Voltage Phasing." Proper equipment ground must be provided to each ground connection in the panel (one for each customer-supplied conductor per phase).

Control Power Supply

The unit is equipped with a control power transformer; it is not necessary to provide additional control power voltage to the unit. The RTAD units are factory-connected for 400V/3/50 with a factory-installed control power transformer.

Heater Power Supply

The evaporator shell is insulated from ambient air and protected from freezing temperatures by electric heaters. Whenever the water temperature drops to approximately 37°F (2.8°C), the thermostat energizes the heaters. The heaters will provide protection from ambient temperatures down to -18°C (0°F). The heaters are factory-wired back to the unit control panel.

CAUTION: Control panel main processor does not check for loss of power to the heat tape nor does it verify thermostat operation. A qualified technician must verify power to the heat tape and confirm operation of the heat tape thermostat to avoid catastrophic damage to the evaporator.

Water Pump Power Supply

Provide power supply wiring with fused disconnect for the chilled water pump(s).

Interconnecting Wiring

Chilled Water Flow (Pump) Interlock

The model RTAD chiller requires a field-supplied control voltage contact input through a flow proving switch 6S56 and an auxiliary contact 6K51 of the chilled water pump contactor.

IMPORTANT: Do not turn the chiller on or off using the chilled-water interlocks.

When making field connections, refer to the appropriate field layout, wiring schematics, and control diagrams that ship with the unit.

Chilled-water pump control

CAUTION: The chilled-water pump must operate for a minimum of one minute after the UCM-CLD receives a command, through the external Auto/Stop input, to shut down the chilled-water system.

On the RTAD units, the controller will initiate the "Run:Unload" mode to terminate a cycle from any of the following:

- Stop key pressed
- Loss of load
- External Auto/Stop input opened

The "Run:Unload" operating mode commands the compressor to completely unload, which takes about ½ minute. This will allow the compressors to be totally unloaded for the next start-up. If only the proof-of-chilled-water-flow interlock is used, the chiller will shut down with an immediate (non-friendly) shutdown and initiate an automatic reset diagnostic.

1. External Auto/Stop (terminals A1 TB3-3 and -4). This input is supplied by the field. A contact closure will start the chiller water pump and chiller, via the UCM-CLD pump control contacts. Opening the contact will put the operating compressors into "Run:Unload" mode and initiate a timing period (1 to 30 minutes, adjustable through the Clear Language Display). This will delay termination of the chilled-water pump operation via the UCM pump control contacts. Examples of the input terminals 1UTB3-3 and

-4 would be a time clock, ambient thermostat, building automation system, etc.

2. UCM-CLD Pump Control Contacts (Terminals A1 TB4-8 and -9)

This output is a set of contacts that will close, starting the chilled-water pump when the external Auto/Stop contacts are closed. When the contacts are opened, 1 to 30 minutes later (adjustable through the Clear Language Display), the UCM-CLD pump control contacts open.

3. Proof-of-Chilled-Water-Flow Interlock (Terminals A1 TB3-1 and -2)

This terminal must be field-installed. Contact closure between the terminals indicates proof of chilled-water flow. Examples of this are a pump starter auxiliary contact, flow switch, differential pressure switch, or a contact from a building automation system. Opening of this contact will immediately shut down the chiller and initiate an automatic reset diagnostic, indicating loss of chilled-water flow.

Alarm and Status Relay Output (Programmable Relays)

Alarm/Running/Maximum Capacity Outputs

Terminals 1 to 7 on terminal strip TB4 of the A1 board provide a variety of contact outputs on the RTAD. These are dependent on the setting of Programmable Relay Setup (Service Setting Menu) and its relationship to diagnostics, compressors operating, and the system operating at full capacity.

As shown in Figure 7, there are three relays.

Installation - Electrical

Figure 7 - Alarm / Running / Maximum capacity relay output for the RTAD unit.

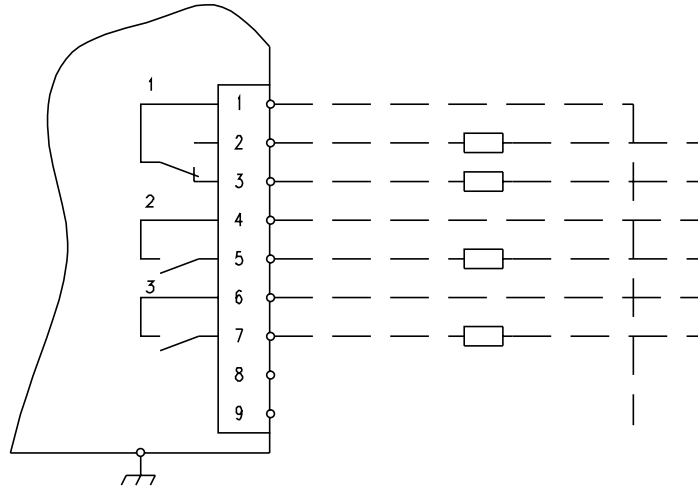


Table 5 - Alarm / Running / Maximum capacity relay output configuration

Relay output configuration		
1	Relay 1	Alarm
	Relay 2	Compressor running
	Relay 3	Maximum capacity
2	Relay 1	Circuit 1 alarm
	Relay 2	Circuit 2 alarm
	Relay 3	Maximum capacity
3	Relay 1	Alarm
	Relay 2	Circuit 1 running
	Relay 3	Circuit 2 running

Table 6 - Alarm / Running / Maximum capacity menu setting

Programmable Relay Setup Setting (service setting menu)	Relay Output Configuration (Table 5)	Diagnostic that the Alarm relay(s) is active		
		MMR / CMR diag.	MAR / CAR diag.	IFW diag.
1	1	YES	NO	NO
2	1	YES	YES	NO
3	1	YES	YES	YES
4	1	YES	NO	YES
5	2	YES	NO	NO
6	2	YES	YES	NO
7	2	YES	YES	YES
8	2	YES	NO	YES
9	3	YES	NO	NO
10	3	YES	YES	NO
11	3	YES	YES	YES
12	3	YES	NO	YES

Notes:
 MMR: Machine Manual Reset
 CMR: Circuit Manual Reset
 MAR: Machine Auto Reset
 CAR: Circuit Auto Reset
 IFW: Informational Warnings

Installation - Electrical

Low-voltage wiring

The remote devices described below require low-voltage wiring. All wiring to and from these remote analog devices to the UCM-CLD, as described in this paragraph, must be made with shielded, twisted-pair conductors. Be sure to ground the shielding only at the Clear Language Display.

CAUTION: To prevent control malfunction, do not run low-voltage wiring (<30V) in conduits with conductors carrying more than 30 V.

External Emergency stop (normal trip)

The Clear Language Display provides auxiliary control for a customer-specified or -installed latching tripout. When this remote contact 6S2 (furnished by the customer) is provided, the chiller will run normally when the contact is closed. When the contact opens, the unit will trip off on a manually resettable diagnostic. This condition requires manual reset at the chiller switch on the front of the Clear Language Display. To connect, first remove the jumper located between terminal 3 and 4 of A1TB1. Refer to the field diagrams that are shipped with the unit.

External Auto/Stop

If the unit requires the external Auto/Stop function, the installer must provide leads from the remote contacts 6S1 to the proper terminals of the module A1 terminals TB3-3 and TB3-4 in the control panel. The chiller will run normally when the contact is closed. When the contact opens, the compressor(s), if operating, will go to the RUN:UNLOAD operating mode and cycle off. Unit operation will be inhibited. Re-closure of the contacts will permit the unit to automatically return to normal operation. Field-supplied contacts for all low voltage connections must be compatible with dry circuit 24VDC for a 12 mA resistive load.

Refer to the field diagrams that are shipped with the unit.

External circuit lockout - Circuit 1

The UCM provides auxiliary control of a customer-specified or -installed contact closure, for individual operation of circuit number 1. If the contact is closed, the refrigerant circuit will not operate. The refrigerant circuit will run normally when the contact is opened. External circuit lockout will only function if External Circuit Lockout (service setting Menu) is enabled. Connections are shown in the field diagrams that are shipped with the unit.

External circuit lockout - Circuit 2

The UCM provides auxiliary control of a customer-specified or -installed contact closure, for individual operation of circuit number 2. If the contact is closed, the refrigerant circuit will not operate. The refrigerant circuit will run normally when the contact is opened. External circuit lockout will only function if External Circuit Lockout (service setting Menu) is enabled. Connections are shown in the field diagrams that are shipped with the unit.

Ice-making option

Ice-machine control (Operator Setting Menu) must be enabled. The UCM provides auxiliary control for a customer-specified or installed contact closure for ice making. When the remote contact connected to the module A9, terminals TB1 1 and 2, is provided, the chiller will run normally when the contact is open. Upon contact closure, the UCM will initiate an ice-building mode, in which the unit runs fully loaded at all times. In ice-building, the current setpoint will be set at 120%. For example, if the front panel or external current limit setpoint is set to 80%, in ice-building the active current limit is 120%.

Installation - Electrical

If, while in ice-building mode, the unit gets down to the freeze setting (water or refrigerant), the unit will shut down on a manually resettable diagnostic, just as in normal operation.

External chilled-water setpoint: voltage source 2-10 V (dc), or Current source 4-20 mA

This option allows the external setting of the chilled-water setpoint (CWS), independent of the front panel chilled-water setpoint, by one of two means:

- 1 - An isolated voltage input 2-10 V (dc)
- 2 - An isolated current loop input 4-20 mA

Isolated 2-10 V (dc) voltage source input

Set dipswitch SW1-1 of the option module A9 to "OFF." Connect the voltage source to terminals 4 (+) and 5 (-) on option module A9TB1. CWS is now based on the following equation:

$$\text{CWS } ^\circ\text{C} = (\text{V (dc)} * 4.88) - 27.56$$

Sample values for CWS vs. V (dc) signals are shown in Table 7

Table 7: Input values vs. External chilled-water setpoint

Voltage (V (dc))	Current (mA)	Resulting chilled-water setpoint (°C)
3.6	7.2	-10
4.6	9.2	-5
5.6	11.3	0
6.7	13.3	5
7.7	15.4	10

Isolated 4-20 mA current source input

Set dipswitch SW1-1 of the option module A9 to "ON."

Connect the current source terminals 4 (+) and 5 (-).

CWS is now based on the following equation:

$$\text{Setpoint } (^\circ\text{C}) = (\text{mA} * 2.44) - 27.56$$

External current limit setpoint: voltage source 2-10 V (dc) or current source 4-20 mA.

This option allows the external setting of the current limit setpoint (CLS), independent of the front panel current-limit setpoint, by one of the two means:

- 1 - an isolated voltage input 2-10 V (dc)
 - 2 - an isolated voltage input 4-20 mA
- To enable external current-limit setpoint operation, external current-limit setpoint (operator setting menu) should be set to "E" using the clear language display.

1- 2-10 V (dc) voltage source input
Set dipswitch SW1-2 of the option module A9 to "OFF."

Connect the voltage source to terminals 7 (+) and 8 (-) of the option module A9. CLS is now based on the following equation:

$$\text{CLS \%} = (\text{V (dc)} * 10) + 20$$

Sample values for CLS vs.

V(dc) signals are shown in Table 8.

Minimum setpoint: 40% (2.0 V (dc) input)

Maximum setpoint: 120% (10.0 V (dc) input)

4-20 mA Current source input

Set dipswitch SW1-2 of the option module A9 to "ON." Connect the current source to terminal 7 (+) and 8 (-) of option module A9. CLS is now based on the following equation:

$$\text{CLS \%} = (\text{mA} * 5) + 20$$

Sample values for CLS versus mA signals are shown in Table 8.

Minimum setpoint = 40% (4.0 mA)

Maximum setpoint = 120% (20.0 mA)

Table 8: Input values vs. external current-limit setpoint

Voltage (V (dc))	Current (mA)	Resulting chilled-water setpoint (°C)
2.0	4.0	40
3.0	6.0	50
4.0	8.0	60
5.0	10.0	70
6.0	12.0	80
7.0	14.0	90
8.0	16.0	100
9.0	18.0	110
10.0	20.0	120

Outdoor air-temperature sensor

This sensor is used for low ambient lockout and chilled-water reset by outdoor air temperature. This sensor is optional on the RTAD units.

Remove the sensor from its shipping location in the control panel and install it in the fresh-air intake on the north wall of the building. Protect the sensor from direct sunlight and shelter it from the elements. Connect leads to terminals 1 and 2 from module A9TB1. All wiring to and from the remote sensor must be made with shielded, twisted-pair conductors.

Be sure to ground the shielding only at the UCM-CLD. Apply tape to the sensor end of the shielding to prevent it from contacting the surface.

WARNING: To prevent injury or death, disconnect the electrical power source before completing wiring connections to the unit.

Installation - Electrical

CAUTION: To prevent overheating at the terminal connections, use copper conductors only.

Communication card CSR

This option allows the Clear Language Display in the control panel on RTAD units to exchange information (operating setpoints and Auto/Standby commands) with a higher-level control device, such as Tracer. A shielded, twisted-pair connection establishes the bidirectional communications link between the unit control panel and the Tracer.

Note: The shielded, twisted-pair conductors must run in a separate conduit.

Caution: To prevent control malfunction, do not run low-voltage wiring (<30V) in conduits with conductors carrying more than 30 volts.

Field wiring for the communication link must meet the following requirements:

1. All wiring must be in accordance with local codes.
2. Communication link wiring must be shielded, twisted-pair wiring.
3. The maximum total length for each communication link is 1,500 meters.
4. The communication link cannot pass between buildings.
5. All UCM-CLD on the communication link can be connected in a "daisy chain" configuration.

Communication-link connection procedure

1. Refer to the Tracer installation literature to determine proper communication-link termination connections at the Tracer module.
2. Connect the shield of the communication-link wiring to the designated shield terminal at the Tracer module.
3. Connect leads to terminals 1 to 4 of TB2 of the module A9 of the UCM-CLD to the Tracer. There is no polarity requirement for the connection.

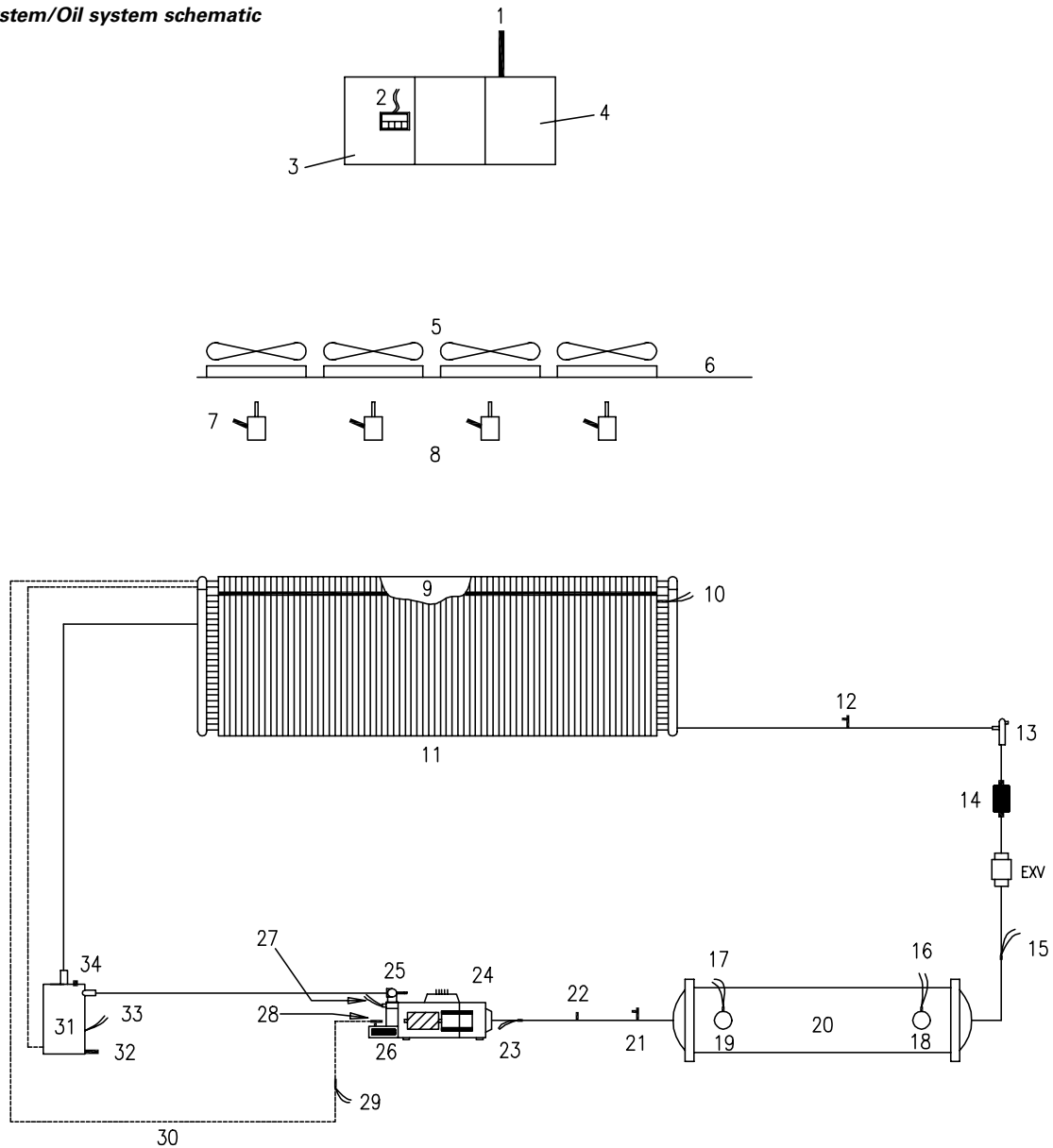
4. At the UCM-CLD, the shield should be cut and taped to prevent any contact between the shield and ground.

Note: On multiple-unit installations, splice the shielding of the twisted pairs that come into each UCM-CLD in the "daisy chain" system. Tape the spliced connections to prevent any contact between the shield and ground. At the last Clear Language Display in the chain, the shield should be cut and taped off.

5. To get the chiller to communicate with a Tracer on a multiple-unit controller, the ICS address under the "service settings" menu must be set and the optional A9 module must be installed. Contact your local Trane representative for this matter.

Operating Principles

Figure 8: System/Oil system schematic



- | | | |
|-----------------------------------|--|---------------------|
| 1. To compressor | 15. Evaporator temperature sensor | 32. Oil drain valve |
| 2. CLD | 16. Water inlet temperature | 33. Heater |
| 3. Control panel | 17. Water outlet temperature | 34. Relief valve |
| 4. Power panel: | 18. Water inlet | |
| Inverters | 19. Water outlet | |
| Fuses (fans, comp) | 20. Evaporator | |
| Disconnect switch | 21. Evaporator service valves | |
| Transformer | 22. Relief valves | |
| 5. Fans | 23. Suction temperature sensor | |
| 6. Fan deck | 24. Compressor | |
| 7. Inverter driven motor | 25. Discharge isolation valve (option) | |
| 8. Fan motors | 26. Oil filter | |
| 9. Oil cooler | 27. High pressure cutout | |
| 10. Condenser temperature sensor | Load control solenoids | |
| 11. Condenser coil with subcooler | 28. Oil line shutoff | |
| 12. Condenser service valves | 29. Oil temperature sensor | |
| 13. Isolation valve | 30. Oil line | |
| 14. Liquid line filter | 31. Oil separator | |

Pre-Start Checkout

Installation Checklist

Complete this checklist as the unit is installed and verify that all recommended procedures are accomplished before the unit is started. This checklist does not replace the detailed Instructions given in the "Installation - Mechanical" and "Installation - Electrical" sections of this manual. Read both sections completely, to become familiar with the installation procedures, prior to beginning the work.

Receiving

- Verify that the unit nameplate data corresponds to the ordering information.
- Inspect the unit for shipping damage and any shortages of materials. Report any damage or shortage to the carrier.

Unit Location and Mounting

- Inspect the location desired for installation and verify adequate service access clearances.
- Provide drainage for evaporator water.
- Remove and discard all shipping materials (cartons, etc.)
- Install optional rubber isolators, if required.
- Level the unit and secure it to the mounting surface.

Unit Piping

- Flush all unit water piping before making final connections to the unit.

CAUTION: If using an acidic commercial flushing solution, construct a temporary bypass around the unit to prevent damage to internal components of the evaporator. To avoid possible equipment damage, do not use untreated or improperly treated system water.

- Connect the chilled water piping to the evaporator.
- Install pressure gauges and shutoff valves on the chilled water inlet and outlet to the evaporator.

- Install a water strainer in the entering chilled water line.
- Install a balancing valve and flow switch (recommended) in the leaving chilled water line.
- Install a drain with shutoff valve or a drain plug on the evaporator waterbox.
- Vent the chilled water system at high points in the system piping.
- Apply heat tape and insulation, as necessary, to protect all exposed piping from freeze-up.

Electrical Wiring

WARNING: To prevent injury or death, disconnect electrical power source before completing wiring connections to the unit.

CAUTION: To avoid corrosion and overheating at terminal connections, use copper conductors only.

- Connect the unit power supply wiring with fused-disconnect to the terminal block or lugs (or unit-mounted disconnect) in the power section of the control panel.
- Connect power supply wiring to the evaporator heater.
- Connect power supply wiring to the chilled water pump.
- Connect power supply wiring to any auxiliary heat tapes.
- Connect the auxiliary contact of the chilled water pump (6K51) in series with the flow switch, if installed, and then connect to the proper terminals.
- For the External Auto/Stop function, install wiring from remote contact (6S1) to the proper terminals on the circuit board.

CAUTION: Information in Interconnecting Wiring: Chilled Water Pump Interlock and External Auto/Stop must be adhered to or equipment damage may occur.

- If alarm and status relay outputs are used, install leads from the panel to the proper terminals on circuit board.
- If the emergency stop function is used, install low voltage leads to terminals on circuit board.
- Connect separate power for the External Emergency Stop option, if applicable.

- If the ice making-option is used, install leads on terminals TB1-1 and 2 on module A9.

General

When installation is complete, but prior to putting the unit into service, the following pre-start procedures must be reviewed and verified correct:

Disconnect all electric power including remote disconnects before servicing. Failure to disconnect power before servicing can cause severe personal injury or death.

- 1 Inspect all wiring connections in the compressor power circuits (disconnects, terminal block, contactors, compressor junction box terminals, etc.). to be sure they are clean and tight.

CAUTION: Verify all connections are made. Loose connections can cause overheating and undervoltage conditions at the compressor motor.

- 2 Open all refrigerant valves in the discharge, liquid, oil and oil return lines.

CAUTION: Do not operate the unit with the compressor, oil discharge, liquid line service valves and the manual shutoff on the refrigerant supply to the coolers "CLOSED".

Failure to have these "OPEN" may cause serious compressor damage.

- 3 Check the power supply voltage to the unit at the main power fused-disconnect switch. Voltage must be within the voltage utilization range and also stamped on the unit nameplate. Voltage imbalance must not exceed 3%.

- 4 Check the unit power phasing L1-L2-L3 in the starter to be sure that it has been installed in an "ABC" phase sequence.

CAUTION: Improper power phasing can result in equipment damage due to reverse rotation.

CAUTION: Do not use untreated or improperly treated water.

Equipment damage may occur.

- 5 Fill the evaporator chilled water circuit. Vent the system while it is being filled. Open the vents on the top of the evaporator shell while filling and close when filling is completed.

Pre-Start Checkout

Important: The use of improperly treated or untreated water in this equipment may result in scaling, erosion, corrosion, algae or slime. The services of a qualified water treatment specialist should be engaged to determine what treatment, if any, is advisable. The Trane Company warranty specifically excludes liability of corrosion, erosion or deterioration of Trane equipment. Trane assumes no responsibilities for the results of the use of untreated or improperly treated water or saline or brackish water.

- 6 Close the fused-disconnect switch(es) that supplies power to the chilled water pump starter.
- 7 Start the chilled water pump to begin circulation of the water. Inspect all piping for leakage and make any necessary repairs.
- 8 With water circulating through the system, adjust water flow and check water pressure drop through the evaporator.
- 9 Adjust the chilled water flow switch for proper operation.

Warning: Use extreme caution when performing the following procedure with power applied. Failure to do so can result in personal injury or death.

- 10 Reapply power to complete procedures.
- 11 Prove all Interlock and Interconnecting Wiring Interlock and External as described in the Electrical Installation section.
- 12 Check and set, as required, all UCM-CLD menu items.
- 13 Stop the chilled water pump.
- 14 Energize compressor and oil separators 24 hours prior to unit start-up.

Unit Voltage Power Supply

Voltage to the unit must meet the criteria given in the Installation-Electrical Section. Measure each leg of the supply voltage at the unit's main power fused-disconnect. If the measured voltage on any leg is not within specified range, notify the supplier of the power and correct the situation before operating the unit.

CAUTION: Provide adequate voltage to the unit. Failure to do so can cause control components to malfunction and shorten the life of relay contact, compressor motors and contactors.

Unit Voltage Imbalance

Excessive voltage imbalance between the phases of three-phase system can cause motors to overheat and eventually fail. The maximum allowable imbalance is 3 percent. Voltage imbalance is determined using the following calculations:

$$\% \text{ Imbalance} = [(V_x - V_{ave}) \times 100] / V_{ave}$$

$$V_{ave} = (V_1 + V_2 + V_3) / 3$$

V_x = phase with the greatest difference from V_{ave} (without regard to the sign)

For example, if the three measured voltages are 221, 230, and 227 volts, the average would be:
 $(221+230+227)/3 = 226$

The percentage of the imbalance is then:

$$[100(221-226)]/226 = 2.2\%$$

This exceeds the maximum allowable (2%) by 0.2 percent.

Unit Voltage Phasing

Warning: It is imperative that L1, L2, L3 in the starter be connected in the A-B-C phase sequence to prevent equipment damage due to reverse rotation.

It is important that proper rotation of the compressors be established before the unit is started. Proper motor rotation requires confirmation of the electrical phase sequence of the power supply. The motor is internally connected for clockwise rotation with the incoming power supply phased A, B, C. Basically, voltages generated in each phase of a polyphase alternator or circuit are called phase voltages. In a three-phase circuit, three sine wave voltages are generated, differing in phase by 120 electrical degrees. The order in which the three voltages of a

three-phase system succeed one another is called phase sequence or phase rotation. This is determined by the direction of rotation of the alternator. When rotation is clockwise, phase sequence is usually called "ABC," when counter-clockwise, "CBA."

This direction may be reversed outside the alternator by interchanging any two of the line wires. It is this possible interchange of wiring that makes a phase sequence indicator necessary if the operator is to quickly determine the phase rotation of the motor. Proper compressor motor electrical phasing can be quickly determined and corrected before starting the unit. Use a quality instrument, such as the Associated Research Model 45 Phase Sequence Indicator, and follow this procedure.

- 1 Press the STOP key on the UCM-CLD.
- 2 Open the electrical disconnect or circuit protection switch that provides line power to the line power terminal block(s) in the starter panel (or to the unit-mounted disconnect).
- 3 Connect the phase sequence indicator leads to the line Power terminal block, as follows:
- 4 Turn power on by closing the unit supply power fused-disconnect switch.
- 5 Read the phase sequence on the indicator. The "ABC" LED on the face of the phase indicator will glow if phase is "ABC."

WARNING: To prevent injury or death due to electrocution, take extreme care when performing service procedures with electrical power energized.

- 6 If the "CBA" indicator glows instead, open the unit main power disconnect and switch two line leads on the line power terminal block(s) (or the unit mounted disconnect). Reclose the main power disconnect and recheck the phasing.

Pre-Start Checkout

CAUTION: Do not interchange any load leads that are from the unit contactors or the motor terminals. Doing so may damage the equipment.

7 Reopen the unit disconnect and disconnect the phase indicator.

Water System Flow Rates

Establish a balanced chilled water flow through the evaporator. The flow rates should fall between the minimum and maximum values given on the pressure drop curves. Chilled water flow rates below the minimum values will result in laminar flow, which reduces heat transfer and causes either loss of EXV control or repeated nuisance, low temperature, cutouts. Flow rates that are too high can cause tube damage in the evaporator.

Water System Pressure Drop

Measure water pressure drop through the evaporator at the field-installed pressure taps on the system water piping. Use the same gauge for each measurement. Do not include valves, strainers fittings in the pressure drop readings. Pressure drop readings should be approximately those shown in the pressure drop charts in the Installation -Mechanical section.

Unit Start-up Procedures

Daily Unit Start-Up

The time line for sequence of operation is shown at the end of this section and depicts the nominal delays and sequences that a chiller would experience during a typical operational cycle. The time line begins with a power up of the main power to the chiller. The sequence assumes a RTAD chiller with no diagnostics or malfunctioning components. External events such as the operator placing the chiller in Auto or Stop, chilled water flow through the evaporator, and application of load to the chilled water loop causing loop water temperature increases are depicted and the chillers responses to those events are shown, with appropriate delays noted. The effects of diagnostics, and other external interlocks other than evaporator water flow proving, are not considered. The response of the CLD Display is also depicted on the time line.

General

If the pre-start checkout, as discussed above, has been completed, the unit is ready to start.

- 1 Press the STOP key on the CLD module.
- 2 As necessary, adjust the setpoint values in the UCM-CLD « Operator Settings » menu.
- 3 Close the fused-disconnect switch for the chilled water pump. Energize the pump(s) to start water circulation.
- 4 Check the service valves on the discharge line, oil line and liquid line for each circuit. These valves must be open (backseated) before starting the compressors.

CAUTION: To prevent compressor damage, do not operate the unit until all refrigerant and oil line service valves are opened.

- 5 Verify that the chilled water pump runs for at least one minute after the chiller is commanded to stop (for normal chilled water systems).
- 6 Press the AUTO key. If the chiller control calls for cooling and all

safety interlocks are closed, the unit will start. The compressor(s) will load and unload in response to the leaving chilled water temperature.

Once the system has been operating for approximately 30 minutes and has become stabilized, complete the remaining start-up procedures, as follows:

- 1 Check the evaporator refrigerant pressure and the condenser refrigerant pressure under Refrigerant Report on the CLD Module. The pressures are referenced to sea level (1013 mbar - 14.7 psia).
- 2 Measure the system discharge superheat.
- 3 Measure the system subcooling.
- 4 A shortage of refrigerant is indicated if operating pressures are low and subcooling is also low. If the operating pressures, sight glass, superheat and subcooling readings indicate a refrigerant shortage, gas-charge refrigerant into each circuit, as required. With the unit running, add refrigerant vapor by connecting the charging line to the suction charging service valve port until operating conditions become normal.

CAUTION: If both suction and discharge pressures are low but subcooling is normal, a problem other than refrigerant shortage exists. Do not add refrigerant, as this may result in overcharging the circuit. Use only refrigerants specified on the unit nameplate (HFC 134a) and Trane Oil 00048. Failure to do so may cause compressor damage and improper unit operation.

Seasonal Unit Start-Up Procedure

- 1 Close all valves and re-install the drain plugs in the evaporator.
- 2 Service the auxiliary equipment according to the start-up/maintenance instructions provided by the respective equipment manufacturers.
- 3 Close the vents in the evaporator chilled water circuits.

- 4 Open all the valves in the evaporator chilled water circuits.
- 5 Open all refrigerant valves to verify they are in the open condition.
- 6 If the evaporator was previously drained, vent and fill the evaporator and chilled water circuit. When all air is removed from the system, re-install the vent plugs on top of the evaporator shell.

CAUTION: Ensure that the compressor and oil separator heaters have been operating for a minimum of 24 hours before starting. Failure to do so may result in equipment damage.

- 7 Check the adjustment and operation of each safety and operating control.
- 8 Close all disconnect switches.
- 9 Refer to the sequence for daily unit startup for the remainder of the seasonal startup.

Unit Start-up Procedures

System Restart After Extended Shutdown

Follow the procedures below to restart the unit after extended shutdown:

- 1 Verify that the liquid line service valves, oil line, compressor discharge service valves (when supplied) are open (backseated).

CAUTION: To prevent damage to the compressor, be sure that all refrigerant valves are open before starting the unit.

- 2 Check the oil separator oil level (see Maintenance Procedures section).

- 3 Fill the evaporator water circuit. Vent the system while it is being filled. Open the vent on the top of the evaporator while filling and close when filling is completed.

CAUTION: Do not used untreated or improperly treated water.

Equipment damage may occur.

- 4 Close the fused-disconnect switches that provides power to the chilled water pump.
- 5 Start the evaporator water pump and, while water is circulating, inspect all piping for leakage. Make any necessary repairs before starting the unit.
- 6 While the water is circulating, adjust the water flows and check the water pressure drops through the evaporator. Refer to "Water System Flow Rates" and "Water System Pressure Drop".
- 7 Adjust the flow switch on the evaporator piping for proper operation.
- 8 Stop the water pump. The unit is now ready for start-up as described in "Start-Up Procedures".

Unit Shutdown Procedures

Temporary Shutdown And Restart

To shut the unit down for a short time, use the following procedure:

- 1 Press the STOP key on the UCM-CLD. The compressors will continue to operate and, after unloading for 20 seconds, will stop when the compressor contactors de-energize.
- 2 Stop the water circulation by turning off the chilled water pump. To restart the unit after a temporary shutdown, enable the chilled water pump and press the AUTO key. The unit will start normally, provided the following conditions exist:
 - The UCM-CLD receives a call for cooling and the differential-to-start is above the setpoint.
 - All system operating interlocks and safety circuits are satisfied.

Extended Shutdown Procedure

The following procedure is to be followed if the system is to be taken out of service for an extended period of time, e.g. seasonal shutdown:

- 1 Test the unit for refrigerant leaks and repair as necessary.
- 2 Open the electrical disconnect switches for the chilled water pump. Lock the switches in the "OPEN" position.

CAUTION: Lock the chilled water pump disconnect Switch in the "OPEN" position, to prevent pump damage.

- 3 Close all chilled water supply valves. Drain the water from the evaporator.
- 4 Open the unit main electrical disconnect and unit-mounted disconnect (if installed) and lock on the "OPEN" position.

CAUTION: Lock the disconnects in the "OPEN" position to prevent accidental start-up and damage to the system when it has been setup for extended shutdown.

- 5 At least every three months (quarterly), check the refrigerant pressure in the unit to verify that the refrigerant charge is intact.

Maintenance

General

Perform all maintenance procedures and inspections at the recommended intervals. This will prolong the life of the chiller and minimize the possibility of costly failures. Record an operating history for the unit, which will serve as a valuable diagnostic tool for service personnel. By observing trends in operating conditions, an operator can anticipate and prevent problem situations before they occur. If the unit does not operate properly during maintenance inspections, refer to "Diagnostics and Troubleshooting". After the unit has been operating for approximately 30 minutes and the system has stabilized, check the operating conditions and complete the procedures below:

- 3 Have a qualified laboratory perform a compressor oil analysis to determine system moisture content and acid level. This analysis is a valuable diagnostic tool.
 - 4 Contact a qualified service organization to leak test the chiller, to check operating and safety controls, and to inspect electrical components for deficiencies.
 - 5 Inspect all piping components for leakage and damage. Clean out any inline strainers.
 - 6 Clean and repaint any areas that show signs of corrosion.
 - 7 Clean the condenser coils.
- Warning: Position all electrical disconnects in the "Open" position and lock them to prevent injury or death due to electrical shock.**
- 8 Check and tighten all electrical connections as necessary.

Weekly Maintenance

While unit is running in stable conditions.

- 1 Check UCM-CLD pressure for Evaporator, Condenser and Oil.
- 2 The subcooling should never be less than 3°C (5.4 F) under any circumstances.

CAUTION: A clear sightglass alone does not mean that the system is properly charged. Also check rest of system operating conditions.

- 3 Inspect the entire system for unusual conditions and inspect the condenser coils for dirt and debris. If the coils are dirty, refer to coil cleaning.

Monthly Maintenance

- 1 Perform all weekly maintenance procedures.
- 2 Record the system subcooling.
- 3 Record the system superheat.
- 4 Make any repairs necessary.

Annual Maintenance

- 1 Perform all weekly and monthly procedures.
- 2 Check oil sump oil level while unit is off.

Note: Routine changing of the oil is not required. Use an oil analysis to determine the condition of the oil.

Maintenance Procedures

All the air-cooled RTAD chillers are given a complete functional test at the factory covering sensors, wiring, electrical components, microprocessor function, communication capability, expansion valve performance and fans. Where applicable, each unit is factory preset to the customer's design conditions, including leaving water temperature setpoint, current limit, and reset temperature setpoint.

Refrigerant Emission Control

Conservation and emission reduction can be accomplished by following recommended Trane operation, maintenance and service procedures, with specific attention to the following:

- 1 Refrigerant used in any type of air conditioning or refrigerating equipment should be recovered for reuse, recovered and/or recycled for reuse, or reprocessed (reclaimed). Never release refrigerant into the atmosphere.
- 2 Always determine possible recycle or reclaim requirements of the recovered refrigerant before beginning recovery by any method.
- 3 Use approved containment vessels and safety standards. Comply with all applicable transportation standards when shipping refrigerant containers.
- 4 To minimize emissions while recovering refrigerant, use recycling equipment. Always attempt to use methods which will pull the lowest possible vacuum while recovering and condensing refrigerant into containment.
- 5 Refrigeration-system cleanup methods that use filters and dryers are preferred. Do not use solvents that have ozone depletion factors. Properly dispose of used materials.
- 6 Take extra care to properly maintain all service equipment that directly supports refrigeration service work, such as gauges, hoses, vacuum pumps and recycling equipment.
- 7 Stay aware of unit enhancements, conversion refrigerants,

compatible parts and manufacturer's recommendations which will reduce refrigerant emissions and increase equipment operating efficiencies. Follow manufacturer's specific guidelines for conversion of existing systems.

- 8 In order to assist in reducing power-generation emissions, always attempt to improve equipment performance with improved maintenance and operations that will help conserve energy resources.

Refrigerant and Oil Charge Management

Proper oil and refrigerant charge is essential for proper unit operation, unit performance, and environmental protection. Only trained and licensed service personnel should service the chiller.

Some symptoms of a refrigerant under charged unit:

- Low Subcooling
- Larger than normal evaporator approach temperatures (Leaving Water Temperature - Saturated Evaporator Temperature)
- Low Evaporator Refrigerant Temperature Limit
- Low Refrigerant Temperature Cutout diagnostic
- Fully open expansion valve
- Possible whistling sound coming from liquid line (due to high vapor velocity)
- Possible low discharge superheat at high loads
- High Condenser + Subcooler Pressure drop

Some symptoms of a refrigerant over charged unit:

- High Subcooling
- Larger than normal condenser approach temperatures (Entering Condenser Saturated Temperature - Entering Air Temperature)
- Condenser Pressure Limit
- High Pressure Cutout diagnostic
- More than normal number of fans running
- Erratic Fan Control
- Higher than normal compressor power

Maintenance Procedures

- Very low discharge superheat at startup
- Compressor rattle or grinding sound at startup

Some symptoms of an oil over charged unit:

- Larger than normal evaporator approach temperatures (Leaving Water Temperature - Saturated Evaporator Temperature)
- Low Evaporator Refrigerant Temperature Limit
- Low Refrigerant Temperature Cutout diagnostic
- Very erratic liquid level control
- Low unit capacity
- Low discharge superheat (especially at high loads)
- Compressor rattle or grinding sound
- High oil sump level after normal shut down

Some symptoms of an oil under charged unit:

- Compressor rattle or grinding sound
- Lower than normal pressure drop through oil system
- Seized or Welded Compressors
- Low oil sump level after normal shut down
- Lower than normal oil concentrations in evaporator

R134a Field Charging Procedure

Be certain that the electrical power to the unit is disconnected before performing this procedure.

Warning: Position all electrical disconnects in the "OPEN" position and lock them to prevent injury or death due to electrocution.

Refrigerant Charging

If the refrigerant charge needs to be adjusted, be certain to monitor the subcooling and superheat measurements. The subcooling needs to be between 6°C (10F) and 12°C (20F) when the unit is running fully loaded. The ambient temperature is between 24°C (75F) and 38°C (100F) and the leaving water temperature is between 5°C (41F) and 13°C (55F).

Isolating the refrigerant charge in the high pressure side for Low Side Repairs. To perform this operation the unit must be equipped with the optional discharge service valve

If the refrigerant charge needs to be isolated in the high side of the unit, perform the following procedures :

- 1 Press the STOP key and send the unit to a stopping mode.
- 2 Place a manifold gauge set on the backseat port of the liquid line service valve before actually closing the valve.
- 3 Close the liquid line service valve.
- 4 While the unit is in the STOP mode, enable Service Pumpdown for the specific compressor. Service Pumpdown is found under the Service Tests menu of the UCM-CLD.

Note : Service Pumpdown can only be enabled for one compressor at a time. Only one pumpdown per compressor can be performed, until the unit has been reset.

With Service Pumpdown enabled, the Restart inhibit will be ignored, the EXV will be prepositioned and the selected compressor will start and run for one minute.

- 5 Once the compressor stops, close the discharge service valve on the compressor (this valve is optional on RTAD).
- 6 The remaining refrigerant needs to be recovered from the suction line service valve. Attach the inlet of a recovery system to the port of the charging valve. Attach the outlet of the recovery system to the manifold gauge set that is already attached to the access port on the liquid line service valve. The condenser will be used as a storage vessel.
- 7 Complete all necessary repairs.
- 8 Evacuate out of the suction line service charging valve.
- 9 Break the vacuum by adding refrigerant in the suction line through the service valve.

Maintenance Procedures

10 Open all valves, start the unit and verify the refrigerant charge by measuring the subcooling.

Isolating the refrigerant charge in the low pressure side for High Side Repairs

If the refrigerant charge needs to be isolated in the low side of the unit, perform the following procedures :

- 1 Press the STOP key and send the unit to a stopping mode.
- 2 Close the discharge service valve (optional on RTAD).
- 3 Before closing the liquid line service valve, attach a manifold gauge set to the liquid line backseat port.
- 4 Close the liquid line service valve.
- 5 Attach the inlet of a liquid transfer pump to the manifold gauge set and the outlet of the service valve mounted on the suction line. This will transfer the liquid refrigerant. As the low pressure side cannot contain all the charge, the remaining refrigerant will be transferred to a separate vessel.
- 6 Remove all of the vapor from the high side of the system.
- 7 Complete all necessary repairs.
- 8 Evacuate the high side through the access port on the liquid line service valve.
- 9 Open all the valves and run the unit. Verify the refrigerant charge by measuring the subcooling.

Adding Refrigerant

If the entire charge has been removed, perform the following procedures to recharge the unit.

- 1 Open all service valves
- 2 Establish water flow through the evaporator. Connect a hose from the refrigerant bottle to the backseat port on the liquid line shutoff valve. Midseat the valve.

Caution : The evaporator water flow needs to be established and maintained while adjusting the charge to avoid freezing and rupturing the tubes.

- 3 It may not be possible to put the entire amount of refrigerant charge required using step 2. If so, start the unit and add liquid refrigerant

through the liquid line service valve.

- 4 Once the unit has been charged with refrigerant, start the unit. Measure the subcooling and verify that the refrigerant charge is correct.

Table 9 Refrigerant Charge per Circuit in kg.

RTAD	Circuit A	Circuit B
085 std	26	25
085 HE	24	26
100 std	24	26
100 HE	33	36
115 std	33	36
115 HE	42	45
125 std	34	37
125 HE	42	45

Refrigerant Filter Changing Procedure

A dirty filter is indicated by a temperature gradient across the filter, corresponding to a pressure drop. If the temperature downstream of the filter is 4.4°C (8°F) lower than the upstream temperature, the filter should be replaced. A temperature drop can also indicate that the unit is undercharged. Ensure proper subcooling before taking temperature readings.

- 1 With the unit off, verify that the EXV is closed. Close liquid line isolation valve. On units with remote evaporators or oil cooling circuits, close ball valve on oil cooler liquid line.
- 2 Attach vacuum hose to service port on liquid line filter flange.
- 3 Evacuate refrigerant from liquid line and store.
- 4 Remove vacuum hose.
- 5 Depress schrader valve to equalize pressure in liquid line with atmospheric pressure.
- 6 Remove bolts that retain filter flange.
- 7 Remove old filter element.
- 8 Inspect replacement filter element and lubricate o-ring with Trane OIL00048.
Note: do not use mineral oil. It will contaminate the system.
- 9 Install new filter element in filter housing.
- 10 Inspect flange gasket and replace if damaged.

Maintenance Procedures

- 11 Install flange and torque bolts to 19-22 mN (14-16 lb-ft).
- 12 Attach vacuum hose and evacuate liquid line.
- 13 Remove vacuum hose from liquid line and attach charging hose.
- 14 Replace stored charge in liquid line.
- 15 Remove charging hose.
- 16 Open liquid line isolation valve.
On units with remote evaporators or oil cooler circuits, open oil cooler liquid line ball valve.

- Discharge line with optional service valve
- Oil line from separator to compressor
- Oil line drain (lowest point in system)
- Oil cooler
- Oil temperature sensor
- Oil line shut off valve with flare service connection
- Oil filter (internal to compressor) with flare fitting service connection and schrader valve
- Oil flow control valve (internal to the compressor after the filter)

Lubrication System

The lubrication system has been designed to keep most of the oil lines filled with oil as long as there is a proper oil level in the oil sump. The total oil charge can be removed by draining the oil system, oil return line from the evaporator, the evaporator, and the compressor. Very small quantities of oil may be found in other components.

Oil Charging Procedure

Proper charging of the oil system is critical to the reliability of the compressor and chiller. Too little oil can cause the compressor to run hot and inefficiently. When taken to an extreme, low oil level may result in infant failure of the compressor. Too much oil will result in high oil-circulation rates, which will foul the condenser and evaporator performance. This will result in inefficient operation of the chiller. Taken to an extreme, high oil levels may result in erratic expansion valve control or shut down of the chiller due to low evaporator-refrigerant temperature. Too much oil may contribute to long-term bearing wear. Additionally, excessive compressor wear is probable when the compressor is started with the oil lines dry.

Note: The oil system schematic is represented in dotted line on the refrigerant circuit schematic, Figure 8
The oil system consists of the following components:

- Compressor
- Oil separator

The standard oil charge for each circuit size is in Table 10.

Table 10 - Standard oil charge

Unit size	Oil charge (l)
RTAD 085	5
RTAD 100	6
RTAD 115	8
RTAD 115HE	9
RTAD 125	9

Recommendation: check the oil level in the sump using a sight glass attached to charging hoses.

- 1 To measure the oil level, use the oil drain valve on the oil line and a service valve on the discharge line. This measurement can only be made when the circuit is not running.

Note: the bottom plate of the oil separator is approximately 25mm (1") thick.

- 2 After the unit has run for a while, the oil level in the sump can vary greatly. However, if the unit has run "normal" conditions for a long time the level should be between 25 to -100mm (+1" to - 4")

The field charging procedure depends on the circumstances that resulted in the need for oil charge.

- 1 Some service procedures may result in loss of small quantities of oil that must be replaced (oil analysis, compressor filter replacement, re-tubing the evaporator, and so forth.).
- 2 Additionally, some maintenance procedures may result in virtually all of the oil being removed (compressor motor burn or total

Maintenance Procedures

removal of the charge to trouble shoot a unit).

- 3 Finally, leaks may result in a loss of oil that must be replaced.

Factory (initial) Oil-Charging Procedure

The initial charging procedure should be followed any time the unit is new or has had all of the oil removed.

- 1 Add 1 liter oil to the motor cavity or suction line prior to installing the compressor into the chiller.
- 2 The oil-line shutoff valve must be open to allow the oil to pass into the oil lines and the oil separator.
- 3 The oil charging port is a ¼" (6mm) flare fitting with a schrader valve that is on the side of the oil-filter housing. This is the port that must be used to add oil into the compressor so that the filter and lines are full at the first start of the compressor.
- 4 Oil may be put into the unit using either of two methods:

CAUTION: Use only Trane Oil 00048 in the RTAC units to avoid any catastrophic damage to the compressor or unit.

- Have the unit in vacuum. Hook up the oil charging hose to oil charging fitting and submerge the other end into the oil container. Let the vacuum draw the required amount of oil into the unit.
- Have the unit at the same pressure as the oil. Hook up the oil charging hose to the oil charging fitting and the other end to an oil pump. Use the pump to draw oil out of the oil container and push the required amount of oil into the unit.

Note: the compressor filter has an internal shut off valve that will prevent oil from entering the compressor while the compressor is not running. Therefore, there is no concern about flooding the compressor with oil.

Field Oil-Charging Procedure

Use the initial charging procedure when virtually all of the oil has been removed.

Note: this procedure can be followed even with the refrigerant charge isolated in the evaporating section of the unit.

If small quantities of oil were removed to service refrigeration components, such as the evaporator, simply replace the oil that was removed into the serviced component prior to vacuum and recharge of the refrigerant.

If oil was removed to service a compressor or change the filter

follow this procedure:

- 1 If the compressor is a new compressor or has been removed from the system and reworked, add 1 liter oil to the motor cavity prior to installing the compressor into the chiller.
- 2 Install the compressor in the system. Make sure that the filter shut off valve is closed. Other compressor isolation valves may also be closed depending upon the service that was completed. For example, changing the oil filter would require the compressor to be isolated and pulled into vacuum.
Note: Ensure that the compressor is not pressurized.
- 3 Open the flare fitting on the oil-line shut off valve.
- 4 Open the flare fitting on the filter housing. This is the port that must be used to put oil into the compressor.
- 5 Install charging hose on oil charging port (with the Schrader valve) and the other on the oil canister.
- 6 Lift the oil canister, or use a pump, to pour oil into the filter housing.
- 7 When oil comes out of the flare fitting on the oil line shut off valve the filter is full. Stop adding oil.
- 8 Put the cap on the flare on the oil line shut off valve, remove the charging hose and put the cap back on the flare on the filter housing.
- 9 Vacuum the compressor (low side) and prepare it for inclusion in the system. There is a service valve on the suction line. Use these valves to vacuum the compressor.

Maintenance Procedures

10 Open the oil line shut off valve.

Severe damage to the compressor can result if the oil line shut off valve is closed when the compressor is started.

WARNING: Catastrophic damage to the compressor will occur if the oil line shut off valve or the isolation valves are left closed on unit start-up.

11 Open the other compressor isolation valves.

Note: this procedure assumes that the oil that is put into the filter housing does not have contaminants such as non-condensable gases. The oil forces these gases out of the filter and oil line shut off valve without the need to pull a vacuum on this small volume. If the oil has been in an open container or is otherwise contaminated, then this small volume must be subject to vacuum as well. However, the filter cavity is full of oil. Therefore, be sure to use a flash tank in line with the vacuum pump to make sure that oil, that is pulled out of the filter cavity, does not slug the vacuum pump.

Evaporator Heat Tape Checkout Procedure

CAUTION: If the heat tapes wrapped around the evaporator barrel fail, the evaporator will freeze causing catastrophic damage to the entire unit.

To check the heat tapes wrapped around the barrel follow the procedures below.

1 Locate the connection under the evaporator insulation near the bottom of the barrel.

CAUTION: Do not cut past the evaporator insulation. Electrical damage to the heat tape wires will occur if cutting of the insulation is done improperly.

The resistance can be checked with an ohmmeter to determine if there is an open or a short. If a heater has failed, replace as follows:

- 1 Remove the insulation around the heater.
- 2 Remove the old heater.
- 3 The factory installed heaters have the wire run under the insulation of

the evaporator. This can be copied by cutting a small strip of insulation out and replacing it with tape.

- 4 Replace any insulation that was removed.
- 5 Wire the heaters into the system as per the wiring diagram.
- 6 Recheck the resistance to verify that they are wired correctly.

Safety recommendations

To avoid accidents and damage, the following recommendations should be observed during maintenance and service visits:

1. The maximum allowable pressures for system leak testing on low and high pressure side are given in the chapter "Installation". Always provide a pressure regulator.
2. Disconnect the main supply before any servicing on the unit.
3. Service work on the refrigeration system and the electrical system should be carried out only by qualified and experienced personnel.

Maintenance contract

It is strongly recommended that you sign a maintenance contract with your local Service Agency. This contract provides regular maintenance of your installation by a specialist in our equipment. Regular maintenance ensures that any malfunction is promptly detected and corrected and minimizes the possibility that serious damage will occur. Finally, regular maintenance ensures the maximum operating life of your equipment. We remind you that failure to respect these installation and maintenance instructions may result in immediate cancellation of the warranty.

Training

The equipment described in this manual is the result of many years of research and continuous development. To assist you in obtaining the best use of it, and maintaining it in perfect operating condition over a long period of time, the constructor has a refrigeration

and air conditioning service school at your disposal. The principal aim of this is to give operators and maintenance technicians a better knowledge of the equipment they are using, or that is under their charge. Emphasis is particularly given to the importance of periodic checks on the unit operating parameters as well as on preventive maintenance, which reduces the cost of owning the unit by avoiding serious and costly breakdowns.

The manufacturer has a policy of continuous product improvement, and reserves the right to alter any details of the products at any time without notice.

This publication is a general guide to install, use and properly maintain our products. The information given may be different from the specification for a particular country or for a specific order. In this event, please refer to your nearest office.

For additional information, contact:
Distributor/Installer stamp



TRANE[®]

The Trane Company
An American Standard Company
www.trane.com

For more information contact
your local sales office or
e-mail us at comfort@trane.com



Quality Management System Approval

Literature Order Number	RTAD-SVX01A-E4
Date	10/01
New	
Stocking Location	Europe

Since The Trane Company has a policy of continuous product improvement, it reserves the right to change design and specifications without notice.

Société Trane – Société Anonyme au capital de 61 005 000 Euros – Siège Social: 1 rue des Amériques – 88190 Golbey – France – Siret 306 050 188-00011 – RSC Epinal B 306 050 188
Numéro d'identification taxe intracommunautaire: FR 83 3060501888